

# Polar Bear<sup>®</sup> III HD

## 10 Degree Flat Roof Mounting System

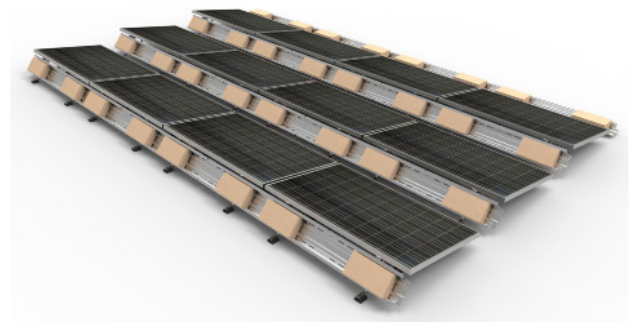
THE ENERGY DENSITY YOU NEED



### Flat roof racking that delivers cost savings and peace of mind

The new Polar Bear III HD design draws on seven years of industry experience. It provides more design and energy density flexibility, improved constructability, universal framed module support, enhanced roof protection, better wire management, and a lower cost than Polar Bear III or any other reliable flat roof mounting solution in the market today. Combined with PanelClaw's project support team of flat roof experts, Polar Bear III HD is the obvious choice for your commercial flat roof projects.

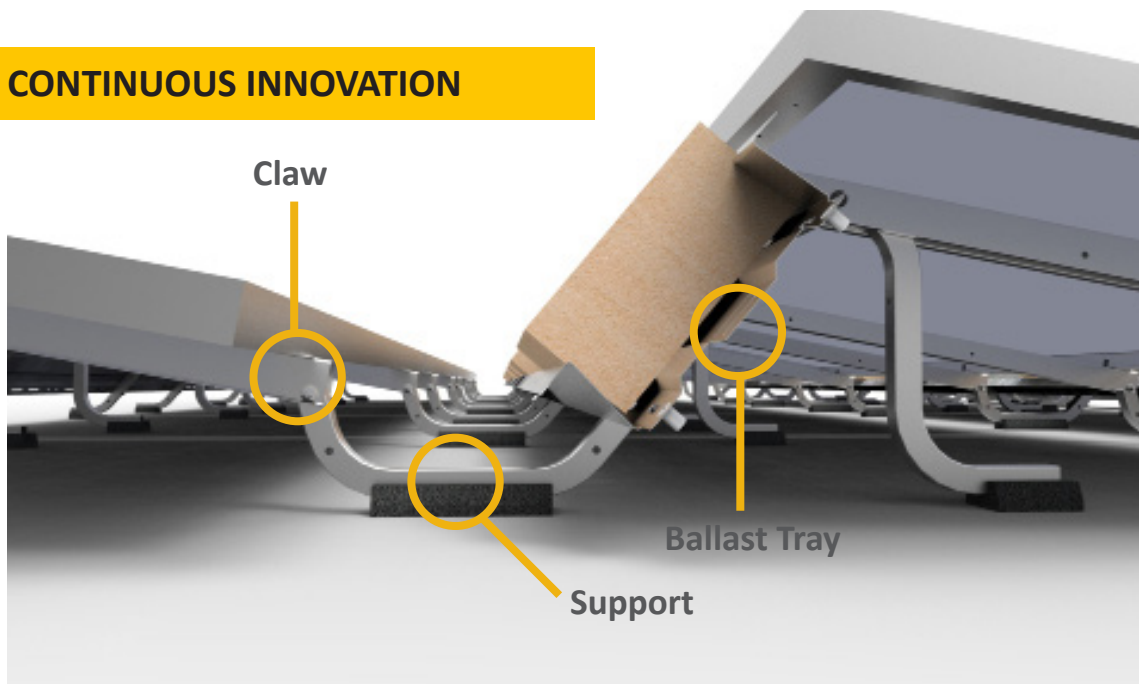
With over 9,000 flat roof projects completed around the world including more than 2,000 jurisdictions in 45 states in the US, we are your flat roof partners. Experience the PanelClaw<sup>®</sup> Advantage on your next flat roof project.



# Polar Bear III HD

## 10 Degree Flat Roof Mounting System

### CONTINUOUS INNOVATION



### Trusted Roof Integrity

Polar Bear® III HD protects the roof with fully captured ballast, integrated recycled rubber roof protection pads and a system design that allows for free water flow.

### Accelerated Construction

The engineered design emphasizes built-in features for construction efficiency:

- Three major components that are light-weight and easy to move
- Pre-installed bolts to quickly mount Ballast Trays
- Single-module tilt-up feature
- Enhanced wire management options

### Safety and Reliability

PanelClaw's industry-leading reliability track record in the flat roof space is the result of our investment in an extensive test program that goes beyond existing codes and standards. We maintain long term partnerships with third party test laboratories and codes and standards bodies throughout the industry.

### Three Components

#### Support

- Easy-to-handle components that weigh less than 2.5 pounds
- Integrated recycled rubber roof protection pads
- Pre-drilled holes for wire management cabling options

#### Ballast Tray

- Angled fit with locking end-tab to fully capture ballast blocks
- Hemmed edges and chamfered corners prevent wiring from coming into contact with sharp edges

#### Claw

- Attachment to module using standard module mounting holes
- UL 2703 certified for electrical bonding and grounding
- Two energy density mounting options
- Pre-drilled for E/W module-to-module wire management

#### Applications

Flat roof (max slope 5°)

Fully ballasted or mechanically attached

#### Module Tilt Angle

10° nominal

#### North/South Module to Module Repeat

52" or 56"

#### Platform Load

~1.9psf - 8 psf

#### Module Orientation

Landscape

#### Module Attachment

Standard module mounting holes

#### Basic Wind Speed

Up to 150 mph  
(>150 mph by approval)

#### Wind Exposure Category

B and C (D by approval)

#### Seismic Compatibility

C, D, E and F

#### Material

G90 steel with  
stainless steel fastener

#### Warranty

25 years

#### Listings and Certifications

ANSI/UL 2703-2015 listed

UL 2703 System Fire  
Rating: Class A with  
Type 1 and Type 2  
modules

(978) 688.4900 | [panelclaw.com](http://panelclaw.com)

© 2019 PanelClaw, Inc.

